

Pennsylvania Department of Corrections

2015-16 Budget Overview

March 2015

Mental Health Initiatives:

- Centralized office for administration of mental health care services
- New misconduct responses to Seriously Mentally Ill (SMI) inmates
- Training: Mental Health First Aid; Crisis Intervention Team (CIT)
- Certified Peer Support Specialist program
- Enhanced diagnosis and treatment of SMI inmates
- Vera Institute Segregation Reduction Project
- Enhanced suicide prevention efforts
- Performance-based contracts for mental health services

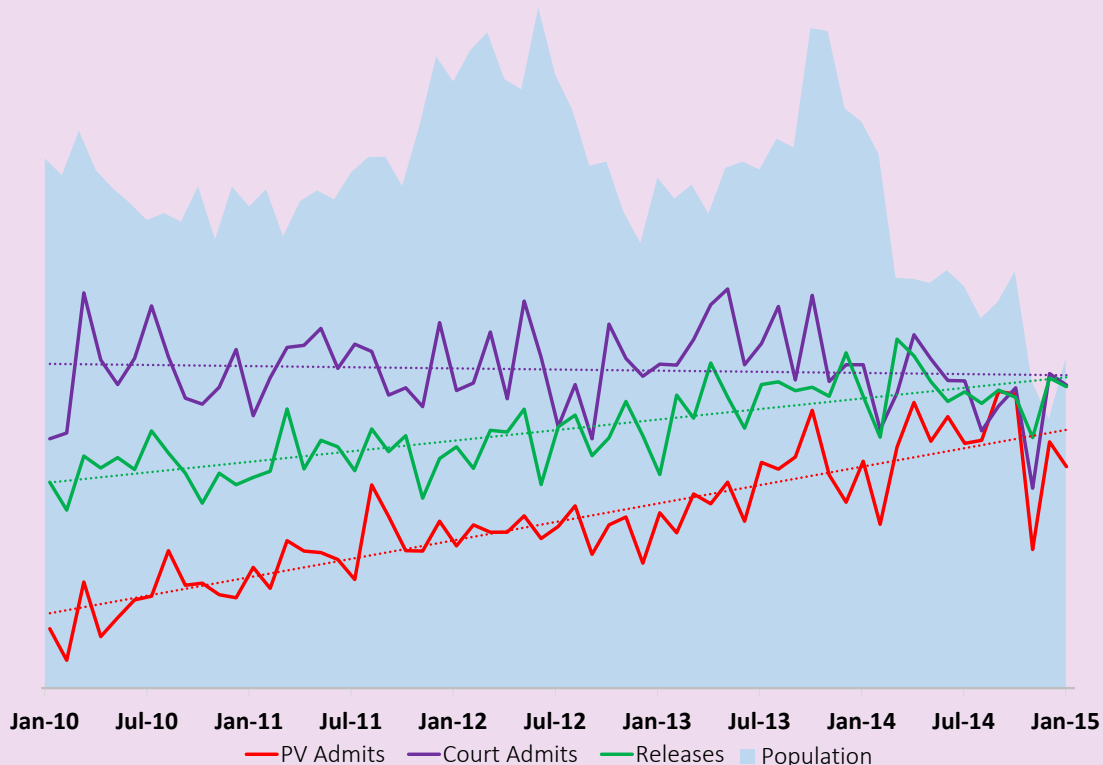
DOC and PBPP Consolidation:

- Enhanced public safety
- Increased efficiency
- Consistent information sharing
- Increased accountability
- Reduced recidivism

DOC Population Reduction in 2014:

- Total population reduced by 756
- In prison only population reduced by 908
- Population at 50,756, compared with projected 56,000
- Largest one-year drop in population in 40 years
- Lowest court commitments in seven years

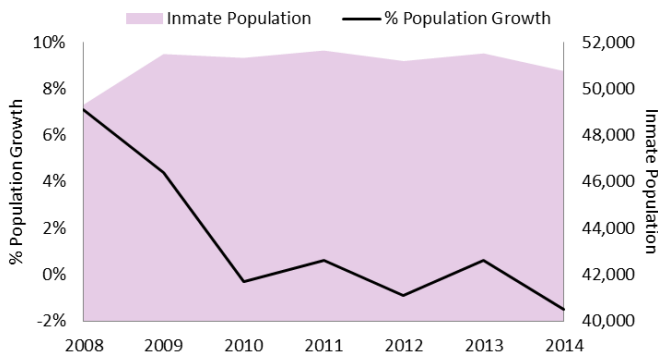
DOC Admissions, Releases, and Population (Jan 2010– Jan 2015)



Population

The Pennsylvania state prison population decreased by 1.5% (756 inmates) between 2013 and 2014. In 2014, the inmate population within state correctional institutions decreased by 908, the largest one-year drop in population since 1971. Total population decreased to 50,756 in 2014 from 51,512 in 2013.

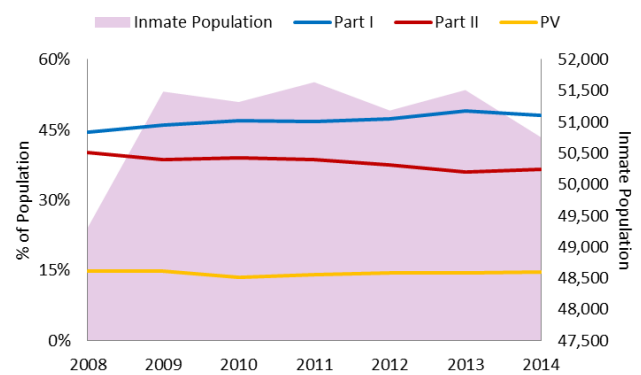
DOC Population Growth



The DOC population increased 3%, from 49,307 in 2008 to 50,756 in 2014.

- Population grew at an average annual rate of 1% per year from 2008 to 2011.
- Population decreased at an average annual rate of less than 0.5% per year from 2012 to 2014.
 - Population decreased by 454 inmates in 2012.
 - Population increased by 328 inmates in 2013.
 - Population decreased by 756 inmates in 2014.

Population by Type

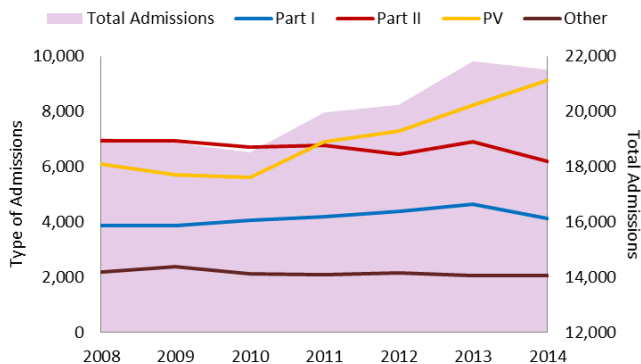


Part I violent offenders comprised less than half of the inmate population for the past five years.

The composition of the population has remained consistent between 2008 and 2014:

2008	2014
45% Part I Offenders	48% Part I Offenders
40% Part II Offenders	37% Part II Offenders
15% Parole Violators	15% Parole Violators

Since 2008, the number of parole violator admissions increased 50%.



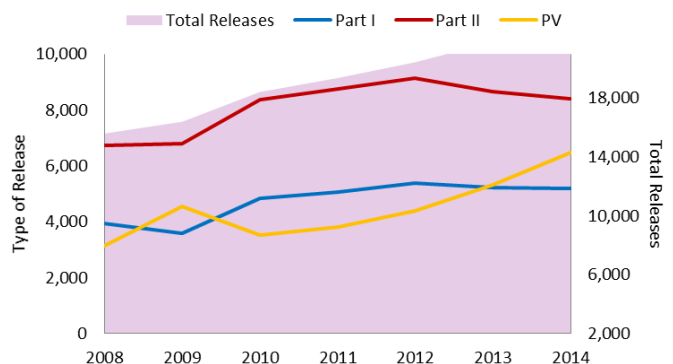
New court commitments decreased 4.3% from 10,782 in 2008 to 10,321 in 2014, with slight increases and decreases in between.

In 2014, 6,194 of the new court commitments were Part II (less serious) offenders and 4,127 were Part I (more serious) offenders.

There were 893 more parole violator admissions in 2014 compared with 2013.

Other admissions have increased since 2006 primarily due to the State Intermediate Punishment (SIP) Program and Detentioners.

In 2014, parole releases increased 22%.



In 2014, there were 20,054 releases back into the community as parolees or max-outs. In addition, there were 2,009 other releases (such as release detentioners, deaths, and releases to other jurisdictions).

16,891 paroles	24% Part I offenders
3,163 max-outs	38% Part II offenders
2,009 other releases	29% Parole Violators
	9% Other
22,063 Total	100% Total

Inmate Statistics

As of December 31, 2014

Males (47,984 offenders) Average age 38 49% Black, 39% White, 11% Hispanic, 1% Other	Females (2,772 offenders) Average age 37 28% Black, 64% White, 7% Hispanic, 1% Other																																																
<p><u>Offenses:</u></p> <p>55.8% are serving time for Part I offenses, of which: 20.3% are for robbery, 17.4% are for aggravated assault, and 13.3% are for 1st Degree Murder.</p> <p>43.6% are serving time for Part II offenses, of which: 39.9% are for drugs, 13.2% are for other sexual crimes, and 13.2% are for other Part II.</p> <p>14.8% of the offenders are parole violators.</p> <p><u>Min Length of Sentence:</u></p> <p>8.5% - 1 year and under, 17.4% - over 1 to 2 years, 30.1% - over 2 to 5 years, 17.2% - over 5 to 10 years, 10.5% - over 10 to 20 years, 5.3% - over 20 years, 10.7% - Life, 0.4% - Death Sentence.</p> <p><u>Max Length of Sentence</u></p> <p>0.6% - under 2 years, 4.5% - 2 years only, 20.4% - over 2 to 5 years, 26.8% - over 5 to 10 years, 19.0% - over 10 to 20 years, 14.2% - over 20 to 50 years, 3.6% - over 50 years, 10.7% - Life, 0.4% - Death Sentence.</p> <p><u>Risk</u></p> <p>31.7% are high risk for re-offending, 43.9% have a moderate risk for re-offending, 24.4% are low risk for re-offending.</p> <p><u>Alcohol and Other Drug</u></p> <p>41.6% need intensive AOD treatment, 23.5% need outpatient treatment, 34.9% do not need AOD treatment.</p> <p><u>Mental Health</u></p> <p>21.7% are on the Mental Health Roster (MHR), 6.9% of males are considered Seriously Mentally Ill (SMI).</p> <p><u>Unskilled Workers</u></p> <p>81.7% are unskilled or possessed no skills, 18.3% are semi-skilled or skilled workers.</p> <p><u>Education</u></p> <p>Average reading level is slightly below 8th grade. 42.2% have less than a 12th grade education.</p> <table border="1" style="width: 100%; border-collapse: collapse; margin-top: 10px;"> <thead> <tr> <th colspan="4" style="text-align: center;">Top Committing County and % of Commitment</th> </tr> </thead> <tbody> <tr> <td>Philadelphia</td> <td style="text-align: center;">29.5%</td> <td>York</td> <td style="text-align: center;">3.2%</td> </tr> <tr> <td>Allegheny</td> <td style="text-align: center;">8.0%</td> <td>Berks</td> <td style="text-align: center;">3.1%</td> </tr> <tr> <td>Delaware</td> <td style="text-align: center;">4.6%</td> <td>Montgomery</td> <td style="text-align: center;">3.1%</td> </tr> <tr> <td>Dauphin</td> <td style="text-align: center;">3.8%</td> <td>Lehigh</td> <td style="text-align: center;">3.0%</td> </tr> <tr> <td>Lancaster</td> <td style="text-align: center;">3.7%</td> <td>Bucks</td> <td style="text-align: center;">2.7%</td> </tr> </tbody> </table>	Top Committing County and % of Commitment				Philadelphia	29.5%	York	3.2%	Allegheny	8.0%	Berks	3.1%	Delaware	4.6%	Montgomery	3.1%	Dauphin	3.8%	Lehigh	3.0%	Lancaster	3.7%	Bucks	2.7%	<p><u>Offenses:</u></p> <p>52.7% are serving time for Part I offenses, of which: 29.2% are for theft, 15.9% are for aggravated assault, and 13.8% are for 3rd Degree Murder.</p> <p>44.4% are serving time for Part II offenses, of which: 46.4% are for drugs, 14.6% are for other Part II, and 9.8% are for DUI.</p> <p>12.8% of the offenders are parole violators.</p> <p><u>Min Length of Sentence:</u></p> <p>21.4% - 1 year and under, 29.0% - over 1 to 2 years, 24.7% - over 2 to 5 years, 9.5% - over 5 to 10 years, 5.6% - over 10 to 20 years, 2.1% - over 20 years, 7.3% - Life, 0.5% - Death Sentence.</p> <p><u>Max Length of Sentence</u></p> <p>3.2% - under 2 years, 14.8% - 2 years only, 29.2% - over 2 to 5 years, 24.3% - over 5 to 10 years, 12.2% - over 10 to 20 years, 7.4% - over 20 to 50 years, 1.4% - over 50 years, 7.3% - Life, 0.1% - Death Sentence.</p> <p><u>Risk</u></p> <p>21.8% are high risk for re-offending, 43.6% have a moderate risk for re-offending, 34.6% are low risk for re-offending.</p> <p><u>Alcohol and Other Drug</u></p> <p>55.8% need intensive AOD treatment, 12.3% need outpatient treatment, 32.0% do not need AOD treatment.</p> <p><u>Mental Health</u></p> <p>65.5% are on the MHR, 27.7% of females are considered SMI.</p> <p><u>Unskilled Workers</u></p> <p>72.4% are unskilled or possessed no skills, 27.6% are semi-skilled or skilled workers.</p> <p><u>Education</u></p> <p>Average reading level is slightly below 9th grade. 34.1% have less than a 12th grade education.</p> <table border="1" style="width: 100%; border-collapse: collapse; margin-top: 10px;"> <thead> <tr> <th colspan="4" style="text-align: center;">Top Committing County and % of Commitment</th> </tr> </thead> <tbody> <tr> <td>Philadelphia</td> <td style="text-align: center;">15.2%</td> <td>Lackawanna</td> <td style="text-align: center;">3.5%</td> </tr> <tr> <td>Delaware</td> <td style="text-align: center;">5.4%</td> <td>Dauphin</td> <td style="text-align: center;">3.2%</td> </tr> <tr> <td>Allegheny</td> <td style="text-align: center;">4.7%</td> <td>Lehigh</td> <td style="text-align: center;">2.8%</td> </tr> <tr> <td>Lancaster</td> <td style="text-align: center;">3.6%</td> <td>Montgomery</td> <td style="text-align: center;">2.7%</td> </tr> <tr> <td>Bucks</td> <td style="text-align: center;">3.5%</td> <td>Jefferson</td> <td style="text-align: center;">2.6%</td> </tr> </tbody> </table>	Top Committing County and % of Commitment				Philadelphia	15.2%	Lackawanna	3.5%	Delaware	5.4%	Dauphin	3.2%	Allegheny	4.7%	Lehigh	2.8%	Lancaster	3.6%	Montgomery	2.7%	Bucks	3.5%	Jefferson	2.6%
Top Committing County and % of Commitment																																																	
Philadelphia	29.5%	York	3.2%																																														
Allegheny	8.0%	Berks	3.1%																																														
Delaware	4.6%	Montgomery	3.1%																																														
Dauphin	3.8%	Lehigh	3.0%																																														
Lancaster	3.7%	Bucks	2.7%																																														
Top Committing County and % of Commitment																																																	
Philadelphia	15.2%	Lackawanna	3.5%																																														
Delaware	5.4%	Dauphin	3.2%																																														
Allegheny	4.7%	Lehigh	2.8%																																														
Lancaster	3.6%	Montgomery	2.7%																																														
Bucks	3.5%	Jefferson	2.6%																																														

Staff and Inmate Safety

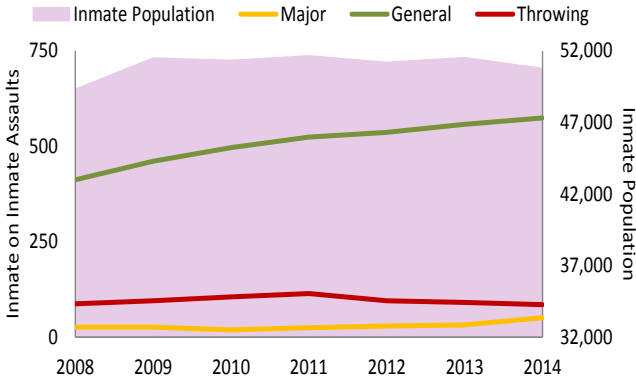
Assaults, misconducts, and drug use are all indicators of prison safety.

The rate of total inmate on inmate assaults has increased slightly since 2008.

The rate of total inmate on staff assaults has remained stable since 2008 (between 13 and 17 per 1,000), with the rate of assaults requiring medical treatment remaining at or below 1 per 1,000.

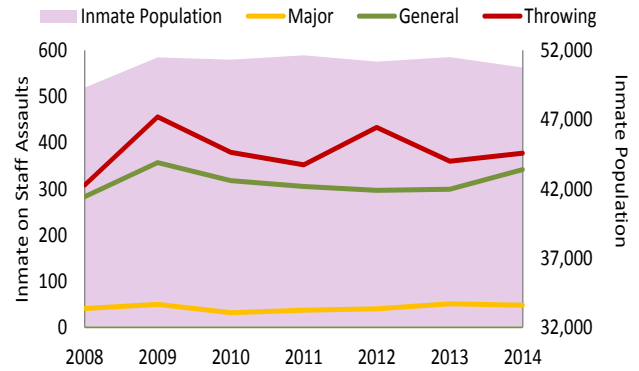
Key Indicators

The rate of inmate on inmate assaults per 1,000 inmates has increased slightly each year since 2008.



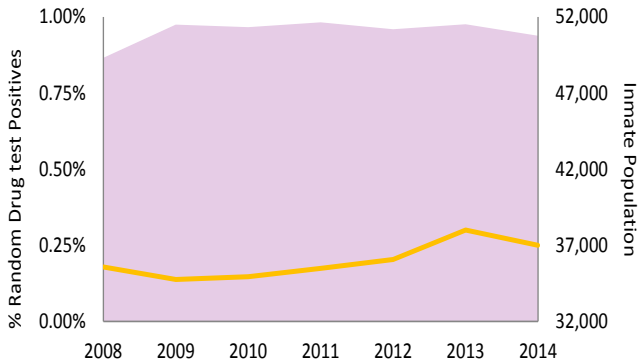
	2008	2009	2010	2011	2012	2013	2014
Incidents	491	543	569	607	607	639	648
Major	26	26	19	25	29	32	51
General	412	461	496	524	536	557	574
Throwing	87	95	105	114	95	91	85
Total	525	582	620	663	660	680	710
Total as a rate per 1,000 inmates	10.6	11.3	12.1	12.8	12.8	13.2	14.0

The rate of inmate on staff assaults was 15.1 per 1,000 inmates in 2014.

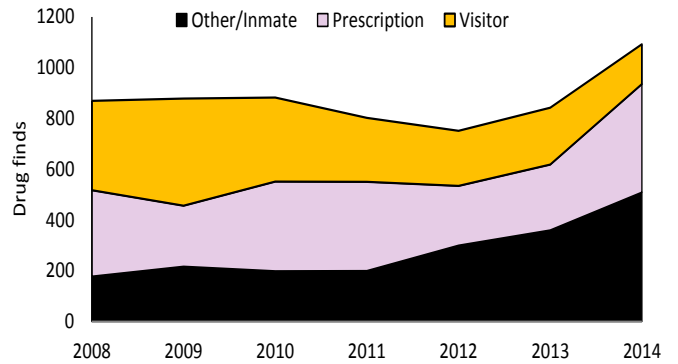


	2008	2009	2010	2011	2012	2013	2014
Incidents	589	764	661	629	694	653	706
Major	41	50	32	37	40	51	48
General	283	357	318	305	297	299	342
Throwing	308	456	379	352	433	360	377
Total	632	863	729	694	770	710	767
Total as a rate per 1,000 inmates	12.8	16.8	14.2	13.4	14.9	13.7	15.1

DOC annual random drug test positive rate remained at less than 0.3% since 2008.



In 2014, 14% of drug finds were on visitors, 38% were expired inmate prescription finds, and 48% were illegal drug finds.



A small percentage of inmates are responsible for a disproportionate number of misconducts. Since 2008, 6% of inmates have accounted for one-third of the serious misconducts.

